

# 1. Where to start

## Requirements

- A server running mSupply with a web server license registered
- Sync server has a static IP and any network permissions required configured
- A mobile tablet fitting the recommended specifications [here](#)

## Information needed

- Store name
- The item master list to be attached to the store
- If you are converting an existing mSupply site (customer) to mSupply Mobile, then you also need to provide the existing customer name that the store is being created for

## Creating mobile stores for new sites

**EACH** individual mobile store needs to have the following steps done on the server, which are detailed later in this Server setup guide:

- Create the sync site [section 2 of this guide](#) **Refer Note below**
- Create the mobile store [section 3 of this guide](#) **Refer Note below**
- Configure the mobile store [section 4 of this guide](#)
- Create user(s) to access the store [section 5 of this guide](#)



Sections 2 and 3 of this guide can now be carried out using the [Sync site wizard](#). These instructions are retained here for reference only.

## Creating mobile stores from existing "Customers" in mSupply

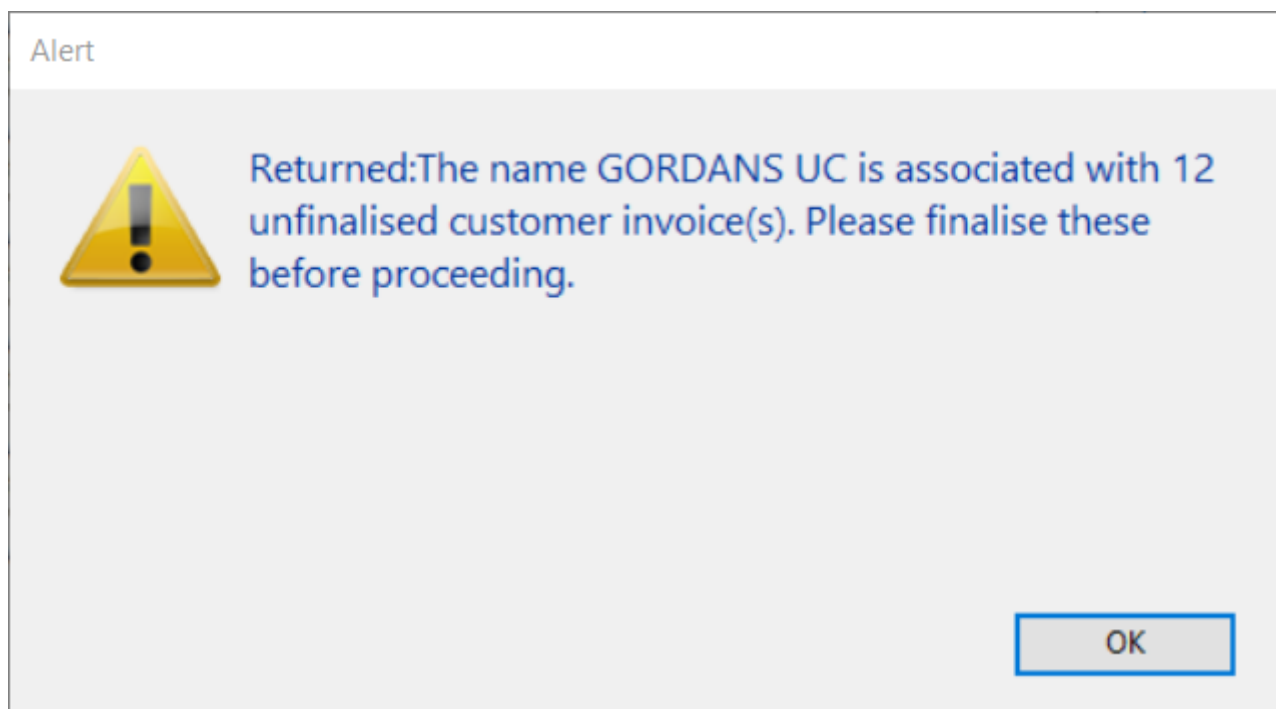
If the stores being created from existing customers in an existing mSupply system, then an additional step needs to be carried out

[Merge the existing customer name with the new store](#). There is some footrunner code that can facilitate this for multiple sites - see [2. Create store from existing customer name using store\\_create\\_from\\_name](#), below.

However, Any unfinalised CIs from supplying stores to these existing customers need to be finalised

first. On a system with supplying stores on multiple sync sites, this can take a long time. Start early, and if possible, ask the supplying stores to refrain from creating new CIs until the merging is done...

If you try to do the merge before finalising unfinalised customer invoices, you will get an error message, and as that message indicates, the merge will not proceed:



Previous: [Setting up the server](#) | | Next: [2. Create Sync Site](#)

From:  
<https://wiki.msupply.foundation/> - mSupply Foundation Documentation

Permanent link:  
[https://wiki.msupply.foundation/en:mobile:setup:server\\_side:where\\_to\\_start?rev=1626389653](https://wiki.msupply.foundation/en:mobile:setup:server_side:where_to_start?rev=1626389653)

Last update: 2021/07/15 22:54

