



**Cette page n'est pas encore traduite entièrement. Merci de terminer la traduction**  
(supprimez ce paragraphe une fois la traduction terminée)

# 1. Where to start

## 1.01. Requirements

- A server running mSupply with a web server license registered
- Sync server has a static IP and any network permissions required configured
- A mobile tablet fitting the recommended specifications [here](#)

## 1.02. General approach

**EACH** mobile store needs to have these:

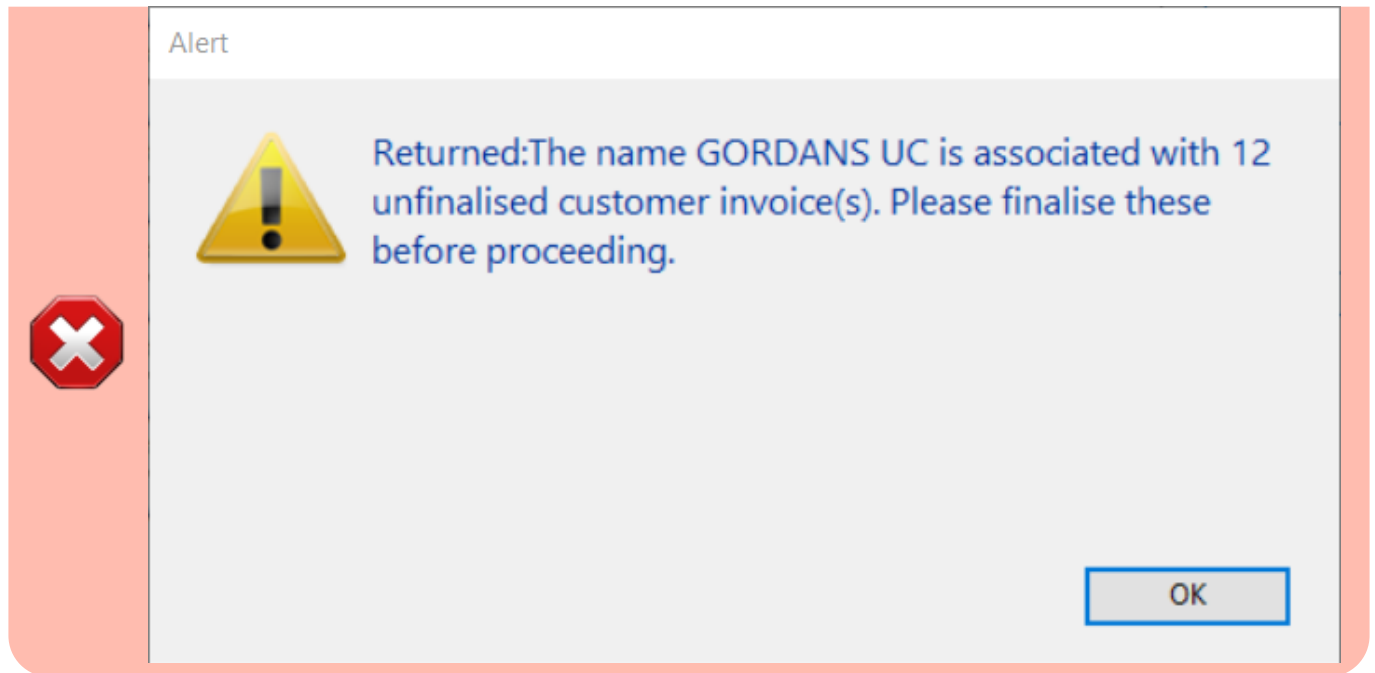
1. [Create sync site](#)
2. [Create and configure store](#)
3. [Create User\(s\) to access the stores.](#)

If the stores being created from existing customers in an existing mSupply system, then an additional step needs to be carried out: [Merge the existing customer name with the new store](#). There is some footrunner code that can facilitate this for multiple sites - see [2. Create store from existing customer name using store\\_create\\_from\\_name](#), below.

**However**, Any unfinalised CIs from supplying stores to these existing customers need to be finalised first. On a system with supplying stores on multiple sync sites, this can take a long time. Start early, and if possible, ask the supplying stores to refrain from creating new CIs until the merging is done...



If you try to do the merge before finalising unfinalised customer invoices, you will get an error message, and as that message indicates, the merge will not proceed:



Return to: [Configurer mSupply Mobile](#)

From:  
<https://wiki.msupply.foundation/> - **mSupply Foundation Documentation**

Permanent link:  
[https://wiki.msupply.foundation/fr:mobile:setup:server\\_side:1?rev=1580840534](https://wiki.msupply.foundation/fr:mobile:setup:server_side:1?rev=1580840534)

Last update: **2020/02/04 18:22**

